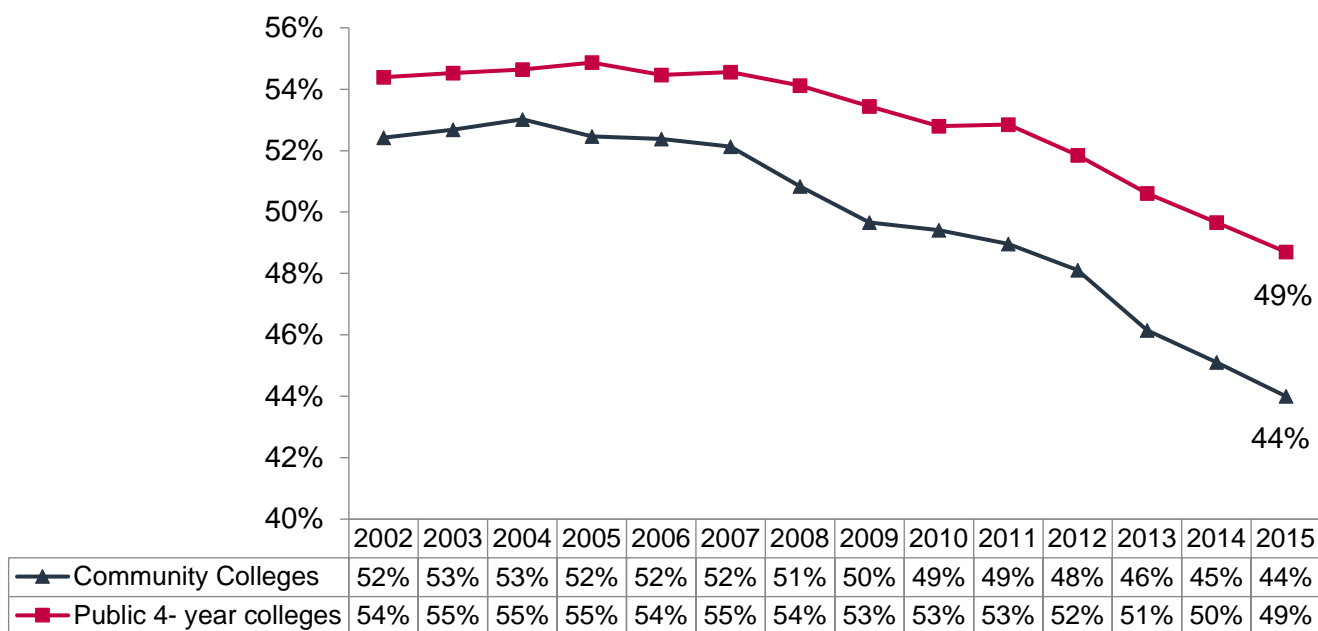


Student Parents' Access to Campus Child Care Continued to Decline in 2015

The 4.8 million parents enrolled in college perform a complicated balancing act.¹ According to new IWPR analysis, availability of campus child care continued to decline in 2015, with just under half of public four-year institutions providing campus child care services, down from a high of 55 percent in 2003-05 (Figure 1). At community colleges, where the largest share of parents are enrolled, only 44 percent report having an on-campus center, down from over half (53 percent) in 2003-04 (Figure 1).² Given the importance of higher education to a family's economic security and their children's future success, ensuring that student parents have access to affordable, quality care must be a priority for educational institutions, higher education advocates, and policymakers.

Figure 1: Campus Child Care Declining, Especially at Community Colleges



Note: Community colleges are defined as public institutions granting Associate's Degrees; 4-Year Public colleges are public institutions awarding Bachelor's Degrees. Includes U.S. mainland states, U.S. Service academies and other U.S. jurisdictions.

Source: IWPR analysis of data from the U.S. Department of Education, National Center for Education Statistics, Integrated Postsecondary Education Data System (IPEDS), 2002-15 Institutional Characteristics Surveys (2015 Preliminary Release).

¹ Barbara Gault, Lindsey Reichlin, Elizabeth Reynolds, and Meghan Froehner. 2014. "4.8 Million College Students are Raising Children." Fact Sheet, IWPR #C424, Washington, DC: Institute for Women's Policy Research.

² Barbara Gault, Lindsey Reichlin, Elizabeth Reynolds, and Meghan Froehner. 2014. "Campus Child Care Declining Even as Growing Numbers of Parents Attend College." Fact Sheet, IWPR #C425, Washington, DC: Institute for Women's Policy Research.